



## MAKE YOUR OWN AUTUMNAL SCENE

As we begin to head into autumn season, where we'll see lots of golden leaves and brisk mornings. Why not be inspired and create your very own autumnal scene to bring indoors? Follow the instructions below to make fallen leaves come alive!

### YOU WILL NEED:

Paper / card

Paints or colour pens

Scissors

Water / wet cloth

Glue

Newspaper / kitchen towel

Weighty books

Leaves

### STEP 1

To create our autumnal scene, we are going to need some leaves. With a grown-up, head outside to your garden, local park or even a forest and begin by observing the trees. Think about the colours you can see, the shapes of the leaves, or the patterns on the leaves. Once you've had a look around, it's time to forage! See if you can see any leaves that have fallen from the trees onto the ground. Collect around 20 leaves that you find interesting – think about colour, shape, size and pattern. You could also collect some sticks too.

Tip: To make your autumnal scene more interesting and for variety, collect a selection of leaves of different shapes and sizes.

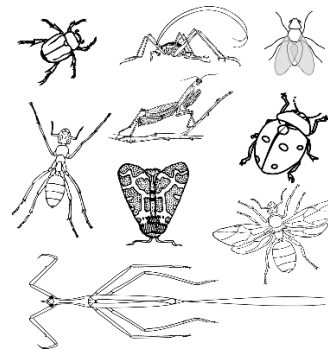
Once you have collected all your leaves, place in a bag or box and bring home.



## STEP 2

Once you are at home, you will need to wipe down your leaves. This will help clean off any soil, mud or sap that might be on the leaves. It will also help flatten curled ones. With a cloth, and hot soapy water, lightly wash down each leaf and place on some newspaper or kitchen towel. Place another piece of newspaper or kitchen towel on top of your leaves and place some weighty books on top. Leave to dry and flatten for roughly 10-20 minutes.

While you wait for your leaves to dry, begin thinking about what animals or insects you might see in your garden. Can you think of any? What about birds, caterpillars, butterflies, ladybirds, owls, cats, rabbits? Did you get any of these? These animals will be helpful for thinking about creating your autumnal scene.



## STEP 3

Now, with your leaves dry, it's time to begin creating your scene! Sort through your leaves and group into colour groups or size groups. This will help you see what kinds of leaves you have.

Begin by creating some woodland creatures that are similar to what you had a think about earlier. You could try making an owl, or butterfly or some birds perched on some branches. It's up to you how creative you want to be.

Cut out smaller shapes from some of your others leaves. You could cut out some ears, beaks, eyes or wings which can be overlaid onto some of the larger leaves that might not need cutting.

Tip: Have a look at the pictures below for some ideas.



#### STEP 4

Now you have created your woodlands creatures from your leaves, it's time to decide where you want to place them on your piece of paper. Use whatever size piece of paper you like – it can be as big or as small as you like. Once you have decided on your design, begin to stick it down with PVA glue.

Note: You will probably need some strong glue to stick down your leaves.

Once your design has been glued in place, place a sheet of newspaper over your design and place some weighty books on top to allow your design to dry in place. Leave to dry in a warm, dry place for roughly 1 hour to make sure everything is well glued.



#### STEP 5

Now for the final touches! To make your scene come alive, add details such as the sky, branches, water or even extra details to your woodland creatures. Use some paints or colour pens to do this. Below you can see tree branches have been added and also some feet for some of my animals and insects.

Be as creative as you like!

Once you have added your details and you're happy with your design, you might like to frame it or pin it to the wall for decoration, especially as we head into the beautiful autumn season.

